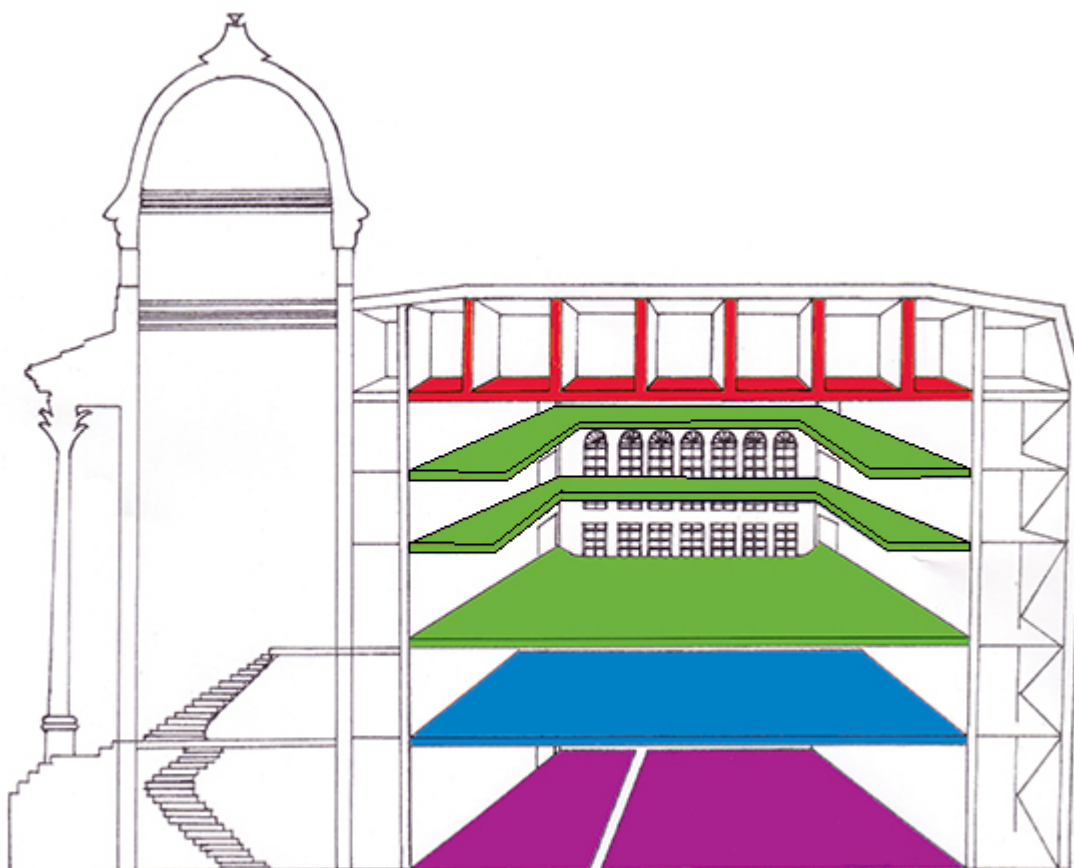


Rentals Overview

We offer the facilities of a modern building within a historic 19th Century exterior. The unique and spectacular Main Space is suited to film production, conferences, and high profile events (artistic and sporting). Adjoining spaces are suited to receptions, meetings, and private parties ; to exhibitions, workshops and rehearsals ; and to performances on a chamber scale.

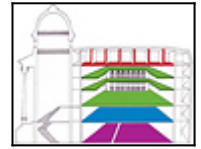
We are located on the edge of the city centre, at the heart of Europe's oldest Chinatown, and within walking distance of the shopping quarters and most of the City's major institutions (cathedrals, universities, museums, galleries, theatres, concert halls). Road and rail access is excellent, and we are just 7 miles from John Lennon Airport.

For bookings and further enquiries contact :- hires [at] theblack-e.co.uk or phone tel. 0151.709.5109



Rentals Overview

A world of possibilities in one building. Gallery, Cafeteria, Chamber Theatre, Workshop Area, Break-out Rooms, Dressing Rooms, Meeting Rooms, and the unique multi-purpose Main Space (an in-the-round auditorium with two overlooking balconies). Available for arts events ; sports promotions ; film production ; exhibitions ; fairs ; conferences ; parties ; rehearsals. One-off rentals ; regular rentals ; and rentals of single and multiple spaces.



Main Space



The Main Space is made up of the Staging Floor (1st floor), Lower Balcony (2nd floor), and Upper Balcony (3rd floor). The space is suited to large-scale events including events to be held in-the-round. The balconies extend around all 4 sides. Windows provide natural light while drawn curtains deliver a black-out. Triple glazing effectively eliminates break-in and break-out of sound. When configured in the round, with both balconies in use, this space will accommodate approximately 550 people.

Main Space Lower Balcony

This balcony is available for both standing audiences and for performers. It also provides excellent vantage points for photography and filming. There are both 13A and 32A TP power supplies available in this area, and there is provision for data services in this space.

Main Space Upper Balcony

The third floor provides access to our second level balcony and the sound and lighting store room.

Roof

These **8** smallish office or workrooms are well suited to production office/media room type functions as well as providing for additional dressing rooms as required. Each has good natural light from three velux windows. However they do suffer from acoustic breakout from both the Main Space and the air

handling plant to varying degrees. Internet and telephone services are to be arranged.

Gallery

A large space well suited to horizontal circulation and breakout use. This space has a coffee bar/food serverly at the rear of the building with extensive space for exhibits and stands in the rest of the volume.

Chamber Theatre



This space on the lower ground floor is minimally equipped at present, and seats around 120 (layout dependent) on 3 rows of rake. The grid is at approximately 3.5M, and the space has two 32A single phase power points in addition to some 13A, with up to 63A TP available if required.

Studio

This space has a large flat wooden floor, ideal for rehearsal and workshop use. There is no acoustic isolation between this space and the Chamber Theatre, which should be borne in mind if using this space as backstage space for the Chamber Theatre.



Source URL: <https://theblack-e.co.uk/content/rentals>